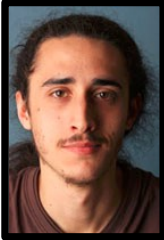


# KEELE VILLAGE & UNIVERSITY FOCUS

March 2015



## Liberal Democrats in Keele:



**James Borg:**  
28 Plantation Park  
[j.borg@keele.ac.uk](mailto:j.borg@keele.ac.uk)  
[jmborg@gmail.com](mailto:jmborg@gmail.com)



**Robin Studd:**  
3 Keele Farmhouse  
[rstudd@btinternet.com](mailto:rstudd@btinternet.com)

### Our Commitments to Keele

- **Fix Local Democracy:**
- *Re-establish and strengthen Campus residents groups*
- *Better links and communication between the Parish Council, University, Students' Union and Residents Groups.*
- **Fight for local services all year round:**
- *Save Post Office services*
- **Champion the use of Green energies in Keele University and Village:**
- *Fight fracking in Keele and surrounding areas*
- **Ensure any development in Keele is in the best interests of residents.**

### Our Commitments to Newcastle

- **Support a review of Local Democracy:**
- *Ward Boundaries, Number of Councillors and Council Expenditure must be reviewed.*
- **Champion the use of Green energies across the Borough:**
- *Fight fracking and Open Cast mining across the Borough*
- **Defend Parish Council and Library Budgets**
- **Green development:**
- *All new housing developments must have Band C energy efficiency rating at least!*
- **Fair rent for students**
- **Defend local services**

**ARE YOU REGISTERED TO VOTE ?** The forthcoming elections on 7<sup>th</sup> May include the borough council, and some Keele parish council; if you have not yet registered, you can do so up to 20<sup>th</sup> April, but don't put it off!  
**APPLICATIONS FOR A POSTAL VOTE** can be made by 21st April. For more information ring the council on 01782 742229 or see council website.

## MUCH ADO ABOUT BUSES!

Recent leaflets from The Greens and Labour have discussed Keele's issues with buses.

We appreciate that some teething problems with the increased bus service have been encountered, **BUT** we should be delighted with the bus service we are now provided with!

Many areas of Newcastle would give anything for regular bus services such as ours.

We can easily fix these problems in collaboration with the service providers, but it would not be so easy to get these services back.

## Introducing Ian Wilkes for Newcastle-under-Lyme



*Ian is a passionate local activist, who believes strongly in the community*

- Resident of the Borough for 52 years. Has run the Audley Post Office with his wife for the past 25 years.
- Borough councillor for the Audley and Bignall End area since 2005
- Former chairman of Audley parish council as well as a member of various committees on the Borough council.
- Member of Audley Patient Panel, which provides a voice for the community about health issues and which also liaises with doctors about best practice
- A school governor at the local high school.

**Website:** <http://www.newcastlelibdems.org.uk/ian-wilkes-for-newcastle/>

**Contact:** [ian.wilkes@newcastlelibdems.org.uk](mailto:ian.wilkes@newcastlelibdems.org.uk)

## Join, Volunteer or Donate

### Join:

**Web:** <http://www.libdems.org.uk/join>

**E-mail:** [membership@newcastlelibdems.org.uk](mailto:membership@newcastlelibdems.org.uk)

**Phone:** 07810542455

### Volunteer:

**E-mail:** [volunteer@newcastlelibdems.org.uk](mailto:volunteer@newcastlelibdems.org.uk)

### Donate:

**Web:** <https://libdems.nationbuilder.com/donate>

**E-mail:** [donate@newcastlelibdems.org.uk](mailto:donate@newcastlelibdems.org.uk)

### Keele Liberal Youth:

**E-mail:** [soc.liberalyouth@keele.ac.uk](mailto:soc.liberalyouth@keele.ac.uk)

