

# KEELE VILLAGE & UNIVERSITY FOCUS

November 2015



## Keele Liberal Democrats

### Contacts

#### Hawthorns/Barnes

Following the Secretary of State's decision not to permit the proposed re-development of the Hawthorns site, Keele University has now completed the process of re-consulting on a new set of plans that are intended to alleviate the issues raised in the Secretary of State's report. The proposed re-development of the Hawthorns site as a housing estate, and proposed re-development of the Barnes halls of residence affects every aspect of our community and therefore should be assessed from numerous points of view.

#### The Student View: *Matthew Tosdevin*

I have mixed views of the new developments. I lived in Hawthorns last year and can see why those blocks are being released; the insulation for one thing was truly terrible. However, what concerns me is whether there will be an adequate number of affordable accommodation if Hawthorns is being replaced with en-suites at Barnes. I applied for the accommodation at Horwood, which is in the same price band as Hawthorns, but presumably demand was too high which is why I was offered Hawthorns. I understand there is high demand for more expensive halls for those that can afford it and I knew students who would have preferred to spend more on en-suite bedrooms, but I am concerned some students will only be offered accommodation they cannot afford. It would also be a shame to see our primary connection with the local area lost.

#### The Resident View: *James Borg*

As a young academic and postgraduate I have numerous friends, colleagues and peers who would dearly love to live in Keele, but due to the high demand for staff housing and the lack of homes for sale in Keele Village, it is simply not possible. These people therefore commute to Keele, and in many cases even drive their children to school in Keele. I therefore entirely support the principle of developing the Hawthorns site; having new families in the Village and potentially alleviating a small part of the Keele parking problem is to be welcomed. Following discussions with members of the Keele Estates team I am also satisfied that the homes will be developed to suitable energy efficiency standard. I would like to see the University opening up the possibility of the Hawthorns being included in the Keele Energy Plan, and would also like to see some of the new homes being owned by the University to be rented out to young academics and postgraduate who currently are not in a position to buy their own home. In short, I am quietly supportive of the new plan – though I do still have some concerns regarding the consideration of mature trees on the site, and the potential traffic impact on the proposed Highway Lane/Hawthorns entrance junction.



**Robin Studd**

3 Keele Farmhouse

01782 626372

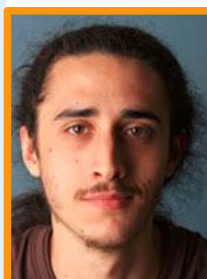
rstudd@btinternet.com



**Matthew Tosdevin**

Chair of Keele Liberal Youth

soc.liberalyouth@keele.ac.uk

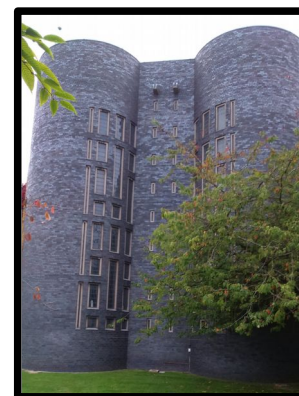


**James Borg**

28 Plantation Park

j.borg@keele.ac.uk

jmborg@gmail.com



#### A Different Point of View:

In a recent leaflet put out by our Green Borough Councillor, Wenslie Naylor, the "issue" of the new Well Pharmacy parking signs blocking a particular view of Keele Chapel was raised. In response to this, please find a unspoilt view of Keele Chapel alongside this article. This picture was taken a few metres behind the offending signs.

**Maybe Cllr. Naylor should be willing to take a different point of view before jumping to negative conclusions in the future.**

**\*\*UPDATE\*\*** The offending signs have now been removed, this is neither a positive or negative change. The view Cllr. Naylor was so concerned about is still affected by various other items of car parking paraphernalia, which should leave us as residents asking why Cllr. Naylor cared so much in the first place?

## The party of IN:

The Liberal Democrats have been clear, we are the only party that will fight wholeheartedly to stay in Europe. The Tories are busy arguing with each other and Mr. Corbyn simply can't decide whether he is IN or OUT! We have no such indecision, we are the party of IN and proud of it – the Liberal Democrats will be on the front-line of the battle to keep Britain in the EU.



## National Picture

By David Becket – Chair of the Newcastle-under-Lyme Lib Dem Policy Steering Group

David Cameron, in his speech to the Tory Party conference, no doubt wanted everyone to come away thinking he had made an apparent 11<sup>th</sup> hour conversion to social justice. From almost anyone else, this would be welcome – but Cameron's empty rhetoric will fool no-one.



If you want to understand this Tory Government you have to look at what they have done, and not the promises of a seasoned PR man. In this case actions truly do speak louder than words. This, after all, is from a Government that has already scrapped child poverty targets, demonised refugees, cut benefits for asylum seekers and slashed housing benefits for families.

It is the most extraordinary chutzpah for Cameron to claim to be a poverty champion at the same time he is picking the pockets of the very poorest workers by slashing their tax credits. The Prime Minister might spin a decent line about prison reform too, but this is from a party that banned prisoners' reading books.

**The Liberal Democrats will not stand idly by and watch the Tories dismantle our society piece by piece, especially after spending 5 years in Government fighting the very policies the Tories are now using to wage war against the poorest and most vulnerable in our society**

## Newcastle-under-Lyme Borough Council

By Marion Reddish – Head of the Lib Dem Group on Newcastle Borough Council

*Why we decided to let Labour form the Cabinet:*

Following the elections in May no party had overall control of the council, however Labour had the largest group. In order for the Conservatives to have formed a cabinet, five political groups would have had to be involved: Conservatives, Green, UKIP, Independents and Liberal Democrats - that would not have led to a stable administration as the differences are very apparent! However we are NOT in coalition with Labour and do vote on an issues by issue basis on all Council decisions. Liberal Democrats hold the balance of power and are keen to have a stable leadership on the Council. **Our priority is to support proposals that help maintain important services for local people. We are very clear that we will oppose Labour if they implement policies that are not in line with Liberal values of equality and Liberty.**

We are keen to improve the economy of Newcastle which is always reflected in our actions on the council. Work in progress includes making sure the new Civic Hub meets the needs of the community. We need to be sure that information from officers will be readily available despite the reduction in office space. We welcome the new Ryecroft development of small retail spaces, however we are still keen to develop opportunities to attract a major shopping retailer.

The Council is also very keen to promote Newcastle as a University town and much of the town centre developments reflect that.

## Join, Volunteer or Donate

### Join:

- Web: <http://www.libdems.org.uk/join>
- E-mail: [membership@newcastlelibdems.org.uk](mailto:membership@newcastlelibdems.org.uk)
- Phone: 07810542455

### Volunteer:

- E-mail: [volunteer@newcastlelibdems.org.uk](mailto:volunteer@newcastlelibdems.org.uk)

### Donate:

- Web: <https://libdems.nationbuilder.com/donate>
- E-mail: [donate@newcastlelibdems.org.uk](mailto:donate@newcastlelibdems.org.uk)

### Keele Liberal Youth:

- E-mail: [soc.liberalyouth@keele.ac.uk](mailto:soc.liberalyouth@keele.ac.uk)

## Lib Dem Membership Surge

Following the 2015 General Election, which is without doubt one of the lowest points in the Lib Dem's history, something amazing happened – people starting joining the party in their droves. Approximately **20,000** new members have joined the Liberal Democrats nationally. This membership surge has even been felt in Keele, with Keele now contributing more Lib Dem members than any other area of Newcastle.



[facebook.com/nulllibdems](https://www.facebook.com/nulllibdems)



[newcastlelibdems.org.uk](http://newcastlelibdems.org.uk)



[@nulllibdems](https://twitter.com/nulllibdems)